



# USER MANUAL

P2181Y-C6

[WWW.YENTEK.EU](http://WWW.YENTEK.EU)



## **Disclaimer**

Except for the accessories attached to the product as specified herein, what is contained in this user manual does not represent the commitments of Yentek Europe GmbH and reserves the right to revise this User Manual, without prior notice, and will not be held liable for any direct, indirect, intended or unintended losses and/or hidden dangers due to installation or improper operation.

Before ordering the products, please learn about the product performance from the distributors to see if it is in line with your needs. The ownership of other trademarks involved in this manual is owned by its respective owners.

The contents of this manual are protected by copyright law. All rights are strictly reserved. Any form of unauthorized reproduction including but not limited to carbon copy, facsimile transmission and electronic copy or email is prohibited.

For more information, please visit:

Website: <http://www.yentek.eu>

Support: [info@yentek.eu](mailto:info@yentek.eu)

# Catalog

- Chapter 1 Product Introduction ..... 4
  - 1.1 Product Photo: ..... 4
  - 1.2 External I/O View ..... 4
  - 1.3 Dimension ..... 5
  - 1.4 Product Specification ..... 5
  - 1.5 Packing ..... 7
  - 1.6 Order Information ..... 7
  - 2.1 Installation Steps ..... 8
    - 2.1.1 Display (HDMI) ..... 8
    - 2.1.2 Network (LAN1-2) ..... 8
    - 2.1.3 Audio Port (Line-out/Mic) ..... 9
    - 2.1.4 Power Button (POWER) ..... 9
    - 2.1.5 COM Port (COM1-6) ..... 9
    - 2.1.6 2\*15P Phoenix Connector(4\*GPIO/4\*COM) ..... 10
    - 2.1.7 DIP Switch (10 digit) ..... 11
    - 2.1.8 Power (9-36V) ..... 13
    - 2.1.9 Expansion Slot (M.2) ..... 13
- Chapter 3 BIOS Setting ..... 14
  - 3.1. BIOS Description ..... 14
  - 3.2 BIOS Basic Function Setting ..... 14
    - 3.2.1 Enter Into BIOS Interface ..... 14
    - 3.2.2 Main Menu (BIOS information and time date) ..... 15
    - 3.2.3 Advance ..... 16
    - 3.2.4 ACPI Settings ..... 17
    - 3.2.5 Super IO Configuration ..... 18
    - 3.2.6 PC Health Status ..... 18
    - 3.2.7 CPU Configuration ..... 19
    - 3.2.8 Miscellaneous Configuration ..... 21
    - 3.2.9 SATA Configuration ..... 22
    - 3.2.10 USB Configuration ..... 23
    - 3.2.11 CSM Configuration ..... 24

3.2.12 Chipset ..... 24

3.2.13 Boot ..... 27

3.2.14 Security ..... 28

3.2.15 Save&Exit ..... 29

Appendix ..... 30

Appendix one: Glossary of terms ..... 30

Appendix Two: Common issue analysis and solution ..... 32

# Chapter 1 Product Introduction

## 1.1 Product Photo:



Image 1: P2181Y-C6 Front View



Image 2: P2181Y-C6 Bottom I/O View

## 1.2 External I/O View

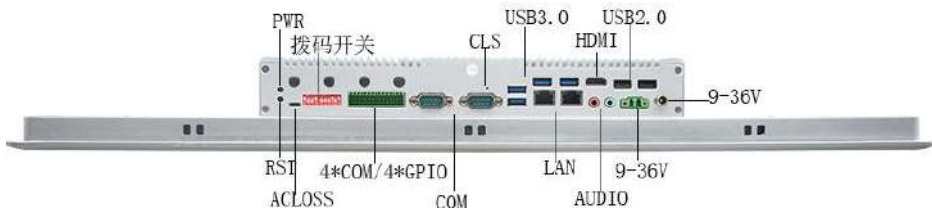
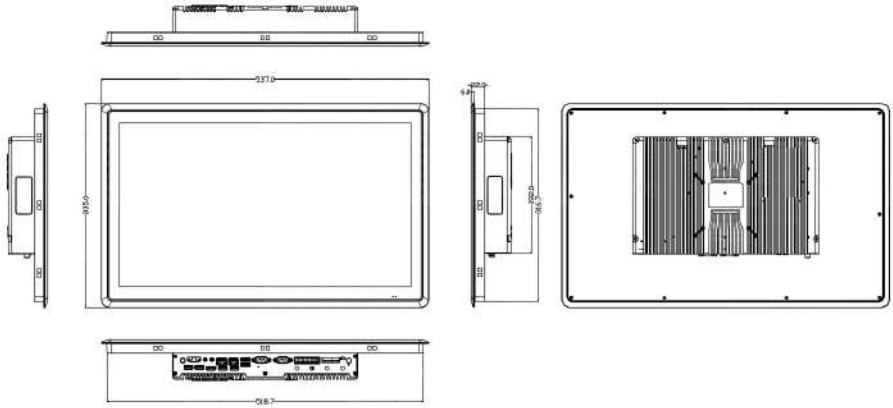


Image 3: P2181Y-C6 Bottom I/O View

**1.3 Dimension**



P2181Y-C6 Dimension

**1.4 Product Specification**

- Processor
  - Onboard Intel®i5-8260U/1.60GHz quad cores 8-thread processor, TDP 15W
- Chipset
  - Intel®SOC
- Memory
  - 2\*DDR4 2400MHz SODIMM RAM slot, up to 64GB
- LCD screen
  - 21.5" LCD, resolution 1920 \* 1080
  - 300 cd/m<sup>2</sup>
- Touch screen
  - Capacitive, support 10 point touch (can change to resistive touch screen)
- LAN
  - 2\*Intel I210 Gigabit Ethernet, support Wake On LAN
- Audio
  - 1\*Line out, 1\*Mic
- COM Port

6\*RS232; COM1~2 DB9 RS232, COM2 RS485/RS422 selectable, COM3~6 RS232 on 2\*15pin Phoenix connector, COM3 RS485 selectable

## ➤ Expansion Slot

1\*M.2/WiFi, support Key-E, 2230, WiFi module

1\*M.2/5G, support Key-B, 2242/52, 5G module

## ➤ Storage

1\*2.5" SATA port

1\*M.2/SSD, support Key M, 2280, NVME PCIe4 SSD

1\*MSATA

## ➤ IO Port

1\*Power button, 1\*One-key recovery(reset key optional, default one-key recovery), 1\*AC LOSS( auto power ON/OFF switch)

1\*Power LED, 1\*HDD LED

1\*HDMI

2\*Intel I210 Gigabit Ethernet, support Wake On LAN

2\*USB3.0, 2\*USB2.0

1\*Mic, 1\*Line out

6\*RS232 COM port; COM1~2 RS232 DB9 COM, COM2 RS485/422 selectable, COM3~6 RS232 on 2\*15P Phoenix connector, COM3 RS485 selectable

10-digit DIP switch, for RS232/RS485 selection

1\*DC\_In Jack and 1\*2pin Phoenix connector, support 9-36V wide voltage input

## ➤ Cooling System

Fanless design

## ➤ Watchdog

Support (L256, 0~255 seconds)

## ➤ Power Connector

1\*DC and 1\*2P Phoenix connector, support DC 9-36V wide voltage input

- Chassis  
Dimension: L537mm x W335mm x H65mm  
Installation: VESA/ Embedded

- Working Environment  
Operating Temp.: -10°C~50°C  
Relative Humidity: 5~90% relative humidity, non-condensing  
Storage Temp.: -20°C~60°C

**1.5 Packing**

- Packing Size: L680mm x W470mm x H148mm
- N.W.: 7.5KG
- G.W.: 8.9KG
- Accessory List:

Name	Qty
Buckle	2pcs

**1.6 Order Information**

**Order Information**

No.	Model	CPU	Memory	MSATA	HDMI	LAN	COM	USB	power
1	P2181Y-C6 V1.0(J6412)	J6412/2.0G	2*SODDR4	1	1	2	6	6	9-36V
2	P2181Y-C6 V1.0(8260U)	I5-8260U/1.6G	2*SODDR4	1	1	2	6	6	9-36V
3	P2181Y-C6 V1.0(7300U)	I5-7300U/2.6G	2*SODDR4	1	1	2	6	6	9-36V
4	P2181Y-C6 V1.0(10210U)	I5-10210U/1.6G	2*SODDR4	1	1	2	6	6	9-36V
5	P2181Y-C6 V1.0(1135G7)	I5-1135G7/2.4G	2*SODDR4	1	1	2	6	6	9-36V

Above order information just for reference

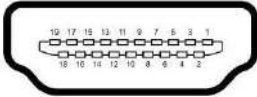


## Chapter 2 Operation Guide

### 2.1 Installation Steps

#### 2.1.1 Display (HDMI)

The computer provide 1\*HDMI PORT

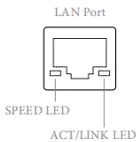


HDMI signal definition

Pin	Signal Name	Pin	Signal Name
1	TMDS Data2+	2	TMDS Data2 Shield
3	TMDS Data2-	4	TMDS Data1+
5	TMDS Data1 Shield	6	TMDS Data1-
7	TMDS Data0+	8	TMDS Data0 Shield
9	TMDS Data0-	10	TMDS Clock+
11	TMDS Clock Shield	12	TMDS Clock-
13	CEC	14	HRC Data-
15	SCL	16	SDA
17	GND	18	+5V
19	Hot Plug Detect		

#### 2.1.2 Network (LAN1-2)

2\*Intel I210 Gigabit Ethernet



#### Network LED Definition

Active/Link LED		SPEED LED	
State	Description	State	Description
Off	No Link	Off	10Mbps Connection
Blinking	Data Activity	Orange	100Mbps Connection
On	Link	Green	1Gbps Connection

**2.1.3 Audio Port (Line-out/Mic)**

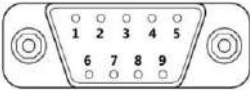
1\*Line-out and 1\*MIC port

**2.1.4 Power Button (POWER)**

1\* Power button [PWR], 1\*Reset button [RST], 1\*Power LED [PWRLED],  
1\*HDD LED

**2.1.5 COM Port (COM1-6)**

6\*RS232, COM1 ~2 RS232 DB9 COM port, COM2 RS485/422 selectable, COM3-6 RS232 on 2\*15P Phoenix connector, COM3 RS485, COM1-2 support pin9 charging function, COM2 RS232/485 selection via external DIP switch + internal COM2\_SW1 jumper, COM3 RS232/485 selection via external DIP switch, DIP switch please refer to 2.1.7, COM3~6 definition please refer to 2\*15P Phoenix connector.



**(COM Port Image)**

**COM1 RS232 Signal Definition**

Pin	Signal Name	Pin	Signal Name
1	DCD	2	RXD
3	TXD	4	DTR
5	GND	6	DSR
7	RTS	8	CTS
9	RI	10	NC

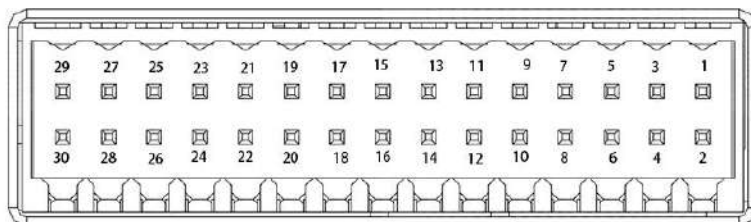
**COM2 RS232/485/422 Signal Definition**

Pin	Signal Name	Pin	Signal Name
1	DCD/RS485-	2	RXD/RS485+
3	TXD/RS422+	4	DTR/RS422-
5	GND	6	DSR

7	RTS	8	CTS
9	RI	10	NC

### 2.1.6 2\*15P Phoenix Connector(4\*GPIO/4\*COM)

The board provide a 2\*15p Phoenix connector, 4-in 4-out GPIO, 4\*COM, power button.

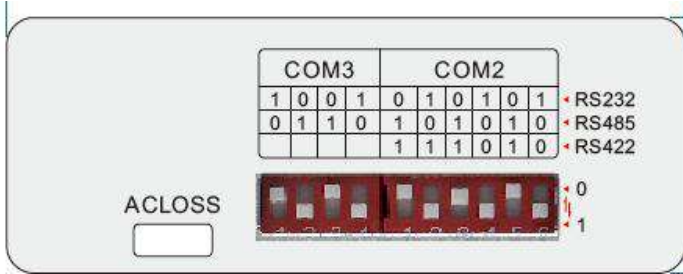


**2\*15p Phoenix Connector**

### 2\*15P Phoenix Connector Definition

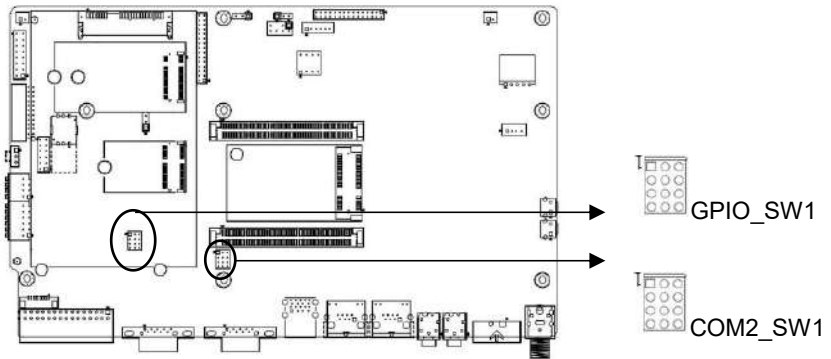
Pin	Signal Name	Pin	Signal Name
1	VCC	2	GPIO-GND
3	DI1	4	DO1
5	DI2	6	DO2
7	DI3	8	DO3
9	DI4	10	DO4
11	COM3_TXD	12	COM4_TXD
13	COM3_RXD_485+	14	COM4_RXD
15	COM3_485-	16	NC
17	GND	18	GND
19	COM5_TXD	20	COM6_TXD
21	COM5_RXD	22	COM6_RXD
23	NC	24	NC
25	GND	26	GND
27	+3.3V	28	FP_SPSW
29	GND	30	GND

2.1.7 DIP Switch (10 digit)

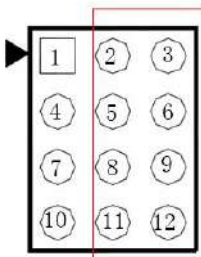


10-digit DIP switch image

COM2 RS232/RS485/RS422 selection via 6-digit DIP switch + COM2\_SW1 (COM2\_SW1 on P1081-C6 I/O board) jumper, COM3 RS232/RS485 selection via 4-digit DIP switch.

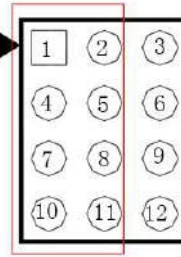


(P1081-C6 sketch map)



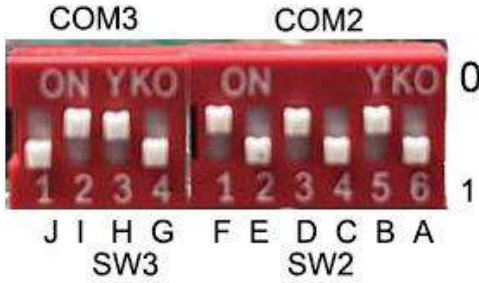
COM2\_SW1

COM2 RS232 COM2\_SW setting



COM2\_SW1

COM2 RS485/422 COM2\_SW setting



10-digit DIP switch image

**COM2 RS232/485/RS422 Setting**

	A	B	C	D	E	F
RS232	1	0	1	0	1	0
RS485	0	1	0	1	0	1
RS422	0	1	0	1	1	1

Note: COM2 RS232/485/422 also need COM\_SW1 jumper setting on P1081-C6.

**COM2\_SW1 (COM2 RS232/485/422) Setting**

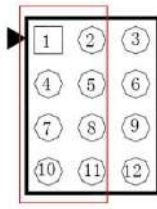
Function	COM2_SW1 Setting
RS232	Short connect 2-3 , 5-6, 8-9, 11-12 pin
RS/485/422	Short connect 1-2, 4-5, 7-8, 10-11 pin

**COM3 RS232/485 Setting**

	G	H	I	J
RS232	1	0	0	1
RS485	0	1	1	0

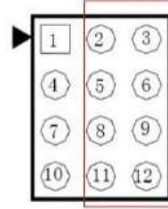
**GPIO Charging Function Setting**

Function	GPIO_SW1 Setting
+12V	Short connect 2-3 , 5-6, 8-9, 11-12 pin
+5V	Short connect 1-2, 4-5, 7-8, 10-11 pin



GPIO\_SW1

**GPIO 5V Setting**

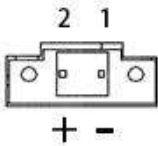


GPIO\_SW1

**GPIO 12V Setting**

**2.1.8 Power (9-36V)**

Provide 1\*DC adaptor port and 1\*2pin Phoenix connector, support 9-36V input



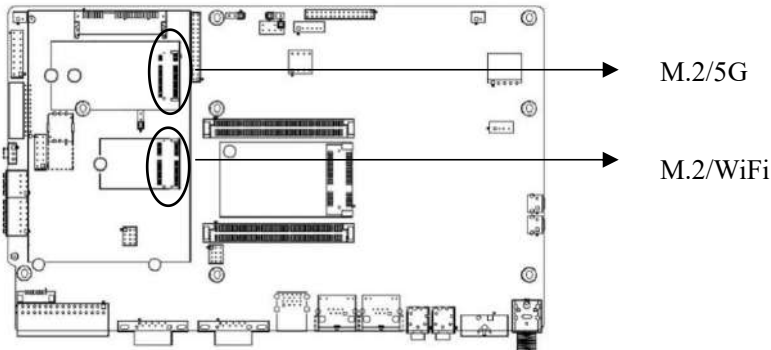
**1\*2pin Phoenix Connector Definition**

Pin	Signal Name	Pin	Signal Name
1	GND	2	VCC

**2.1.9 Expansion Slot (M.2)**

1\* M.2/WiFi, support Key-E, 2230, WiFi module

1\* M.2/5G, support Key-B, 2242/52, 5G module



**Tips:**

1. Please use a dedicated power adapter.
2. How to identify the alarm sound: (a long beep is system memory error; a short beep" is boot sound).

# Chapter 3 BIOS Setting

## 3.1. BIOS Description

BIOS (Basic Input and Output System), via CMOS chip on motherboard, it recorded parameter settings of each hardware of the system. BIOS contains the BIOS setup program, for users to set system parameters according to their own needs, to make the motherboard work normal or execute specific function.

Through BIOS setup program to modify the settings (except date and time), which are stored in the flash memory of system, the power required to memorize CMOS data are supplied by the battery on board, so when the system power off, the data will not lost, when next time re-open the power, system will read the set data. If needed to restore factory setting at the circumstance when can not enter the Setup interface due to misconduct, please short circuit JBA12,3 pin to clear CMOS data.

Note! BIOS settings directly affect the performance of the computer, wrong set parameters will cause damage to the computer, or even can not boot, please use the BIOS built-in default values to restore the normal operation of the system.

Due to the company's different product, the interface will be slightly different, the following image for reference only, it may be not exactly the same with your current using BIOS setup program.

## 3.2 BIOS Basic Function Setting

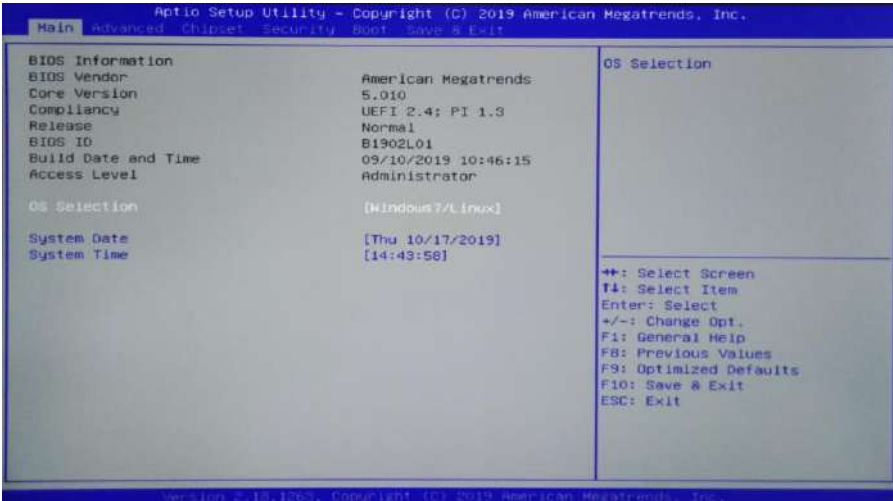
### 3.2.1 Enter Into BIOS Interface

按Following below steps to enter into BIOS interface

- 1、 Power on, the display screen will appear POST interface.
- 2、 When the screen appears "click <DEL>or<ESC> to enter setup", please click <DEL>or <ESC>, and you can enter the BIOS setup program
- 3、 Move the arrow key < ↑ >< ↓ >< ← >< → > to the options which you want to modify, click <Enter>, and you can enter the sub-screen of the option
- 4、 Use the arrow keys and the <Enter> key to modify the value of the selected items, click the Enter key to select BIOS option and modify.
- 5、 Use the <ESC> key to return to the last picture
- 6、 <Page Up/+> Add numeric value or change  
<Page Down/-> Reduce numeric value or change

- <F1> Set sub menu help
- <F9> Set default values (optimize to factory settings)
- <F10> Save BIOS settings

3.2.2 Main Menu (BIOS information and time date)



Bios ID :

Build Date and Time :

Access Level:

System language:

System Date :

Set the current date. In the form of month / day / year. The setting range is:

Month (Jan.-Dec.), Date(01-31), Year(Max to 2099), Week(Mon.~Sun.).

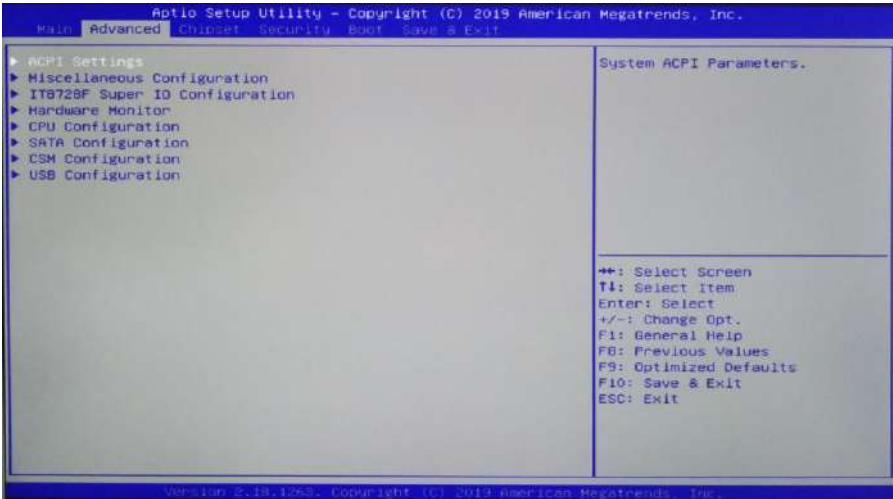
System Time :

Set the current time, In the form of time/minute/second, The setting range is:

Hour(00-23), Minute(00-59), Second(00-59).



3.2.3 Advance



ACPI Settings : Advanced configuration and power management interface settings.

IT8786 Super IO Configuration: contains COM port interrupt number and address settings

Hardware Monitor: system monitoring, hardware monitoring, hardware monitor

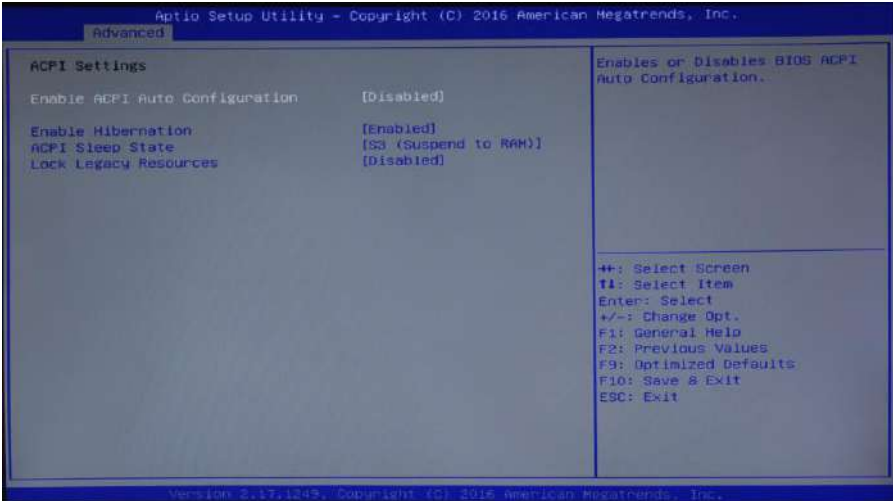
Miscellaneous Configuration : include timing start up, power on auto start-up, watchdog, etc.

CPU Configuration:

CSM Configuration:

USB Configuration:

### 3.2.4 ACPI Settings



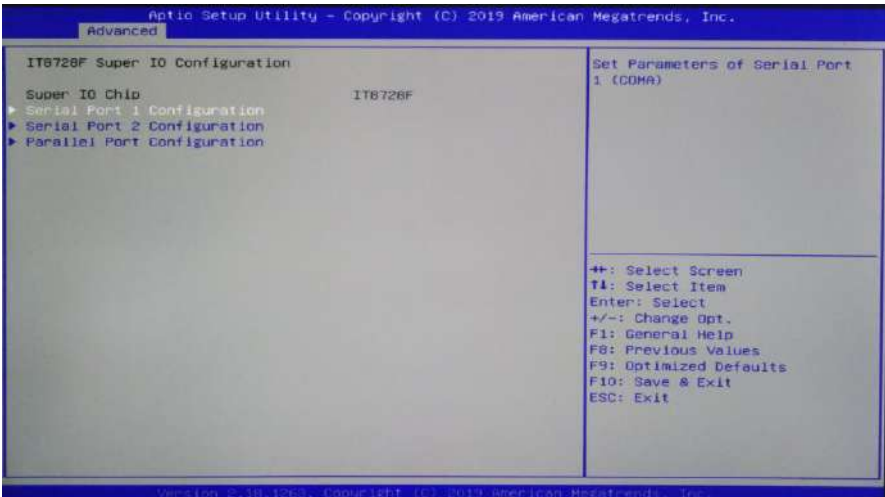
Enable ACPI Auto Configuration : This item is automatically configured for the ACPI, Allow (Enabled) or close (Disabled) BIOS ACPI automatic configuration, default is close (disabled).

Enable Hibernation : Enabled or Disabled system sleep function ( OS/S4 sleep state). This option does not take effect under some OS. Default is Enabled.

ACPI Sleep State : This is used to select the system to enter the power system sleep mode, the pattern is not the same, the system power consumption is not the same degree, Suspend Disabled; close the sleep mode, S1(CPU Stop Clock): CPU stops working, other devices are still normal power supply; S3(Suspend to Ram): Hang up to memory.

Lock Legacy Resources : Resource latch, (Enabled) or (Disabled) resource latch function.

### 3.2.5 Super IO Configuration

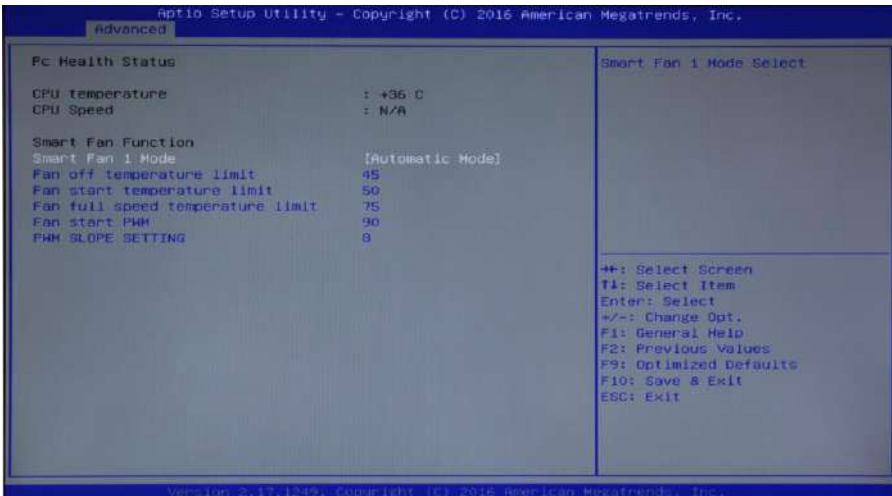


Serial Port 1 Configuration: Super IO configuration information, including COM port interrupt number and address setting.

Serial Port 2 Configuration:

Parallel Port Configuration:

### 3.2.6 PC Health Status



PC Health Status: shows the current system temperature, CPU temperature, fan

speed, and other relevant voltage value. The above parameters have a certain range, system cannot operate beyond the scope.

Smart Fan 1 Mode: This option is whether or not open the CPU automatic fan control function, used to adjust CPU fan speed automatically according to the real-time detected CPU temperature, to achieve the purpose of saving energy.

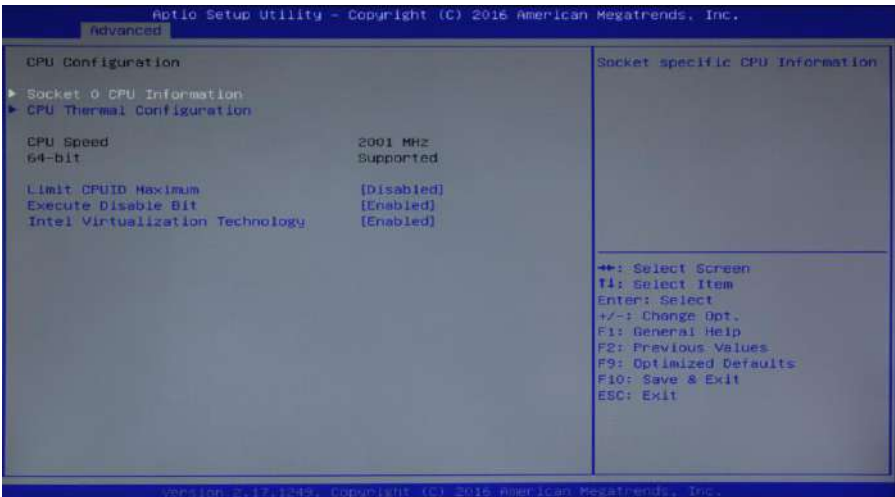
Fan off temperature limit: Fan stop minimum temperature setting.

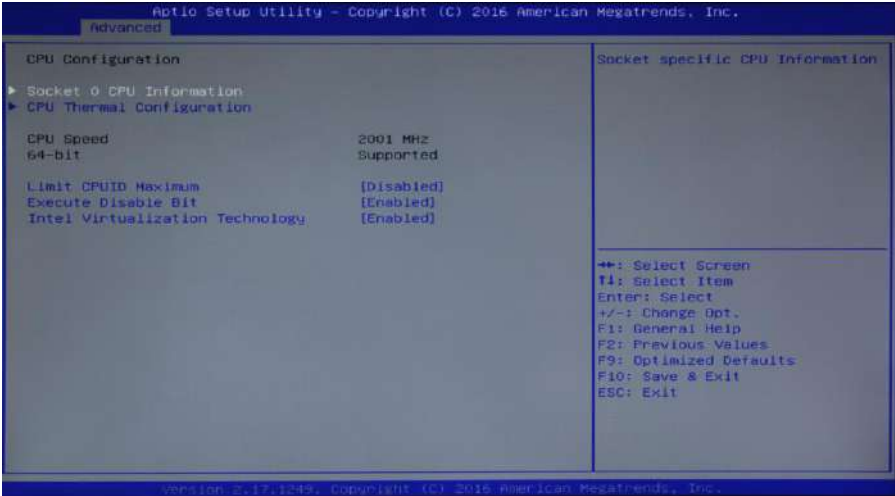
Fan start temperature limit: Fan start minimum temperature setting.

Fan start PWM: Fan start PWM value setting.

PWM slope setting:

### 3.2.7 CPU Configuration



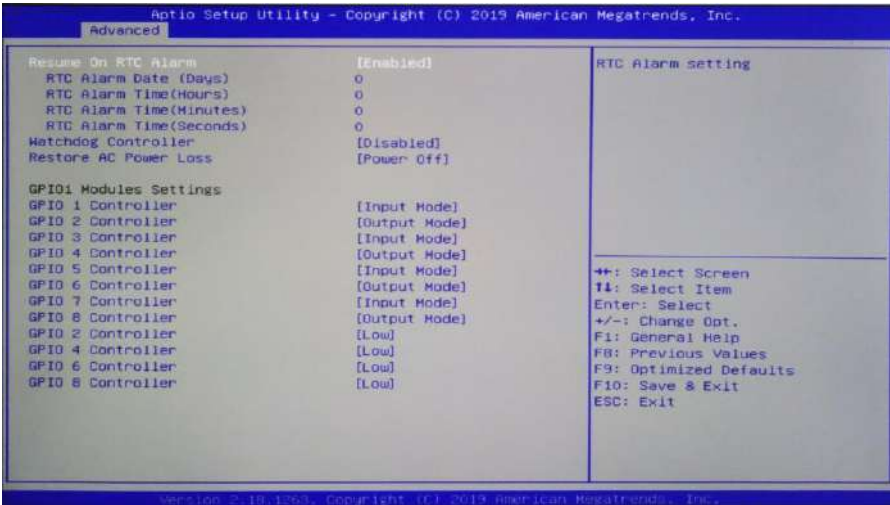


Read only items contain details of the CPU, including the CPU manufacturers, models, frequency, the first level cache size, the second level cache size and other information.

Intel Virtualization Technology :

Intel Virtualization Technology Is Intel's CPU in the system of virtual technology. It makes it possible to enable a PC running a plurality of OS, VT technology is in various types of processors, including dual core processor play very important role, this technique allows the processor with and / or virtualization technology, using Vanderpool technology, we can run two operating systems simultaneously on the same machine. In which a processor running an operating system, another processor running another operating system.

3.2.8 Miscellaneous Configuration



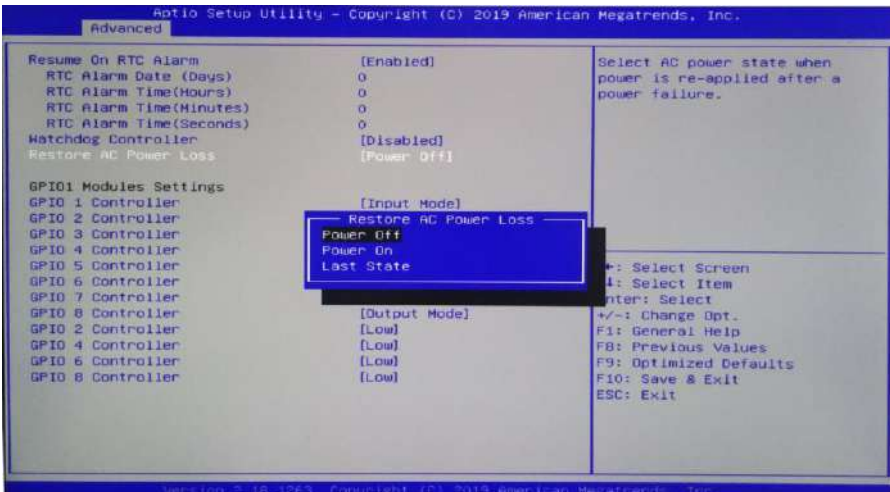
Resume On RTC Alarm:

RTC Alarm Date(Days):

RTC Alarm Time(Hours):

RTC Alarm Time(Minutes):

RTC Alarm Time(Seconds):



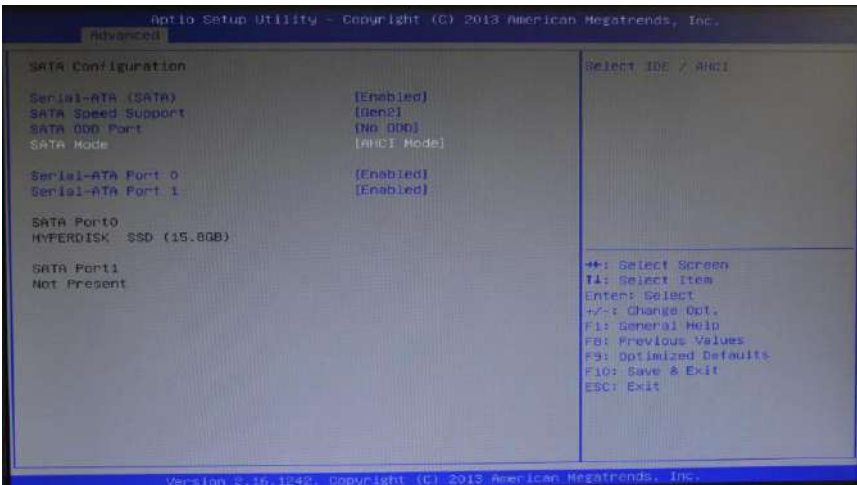
Restore AC Power Loss: this option is used to set the power on condition after connecting to electric. Power Off: need to press power button to power on; Power

On: Power on directly after connecting to electric; Last State: keep previous state after connecting to electric.



Watch dog controller: [Disabled] disable watchdog, [Second mode] set the watchdog to seconds mode, [Minute Mode], set the watchdog to minute mode.

### 3.2.9 SATA Configuration



Serial-ATA (SATA) : (enabled or disabled)

SATA Speed Support :

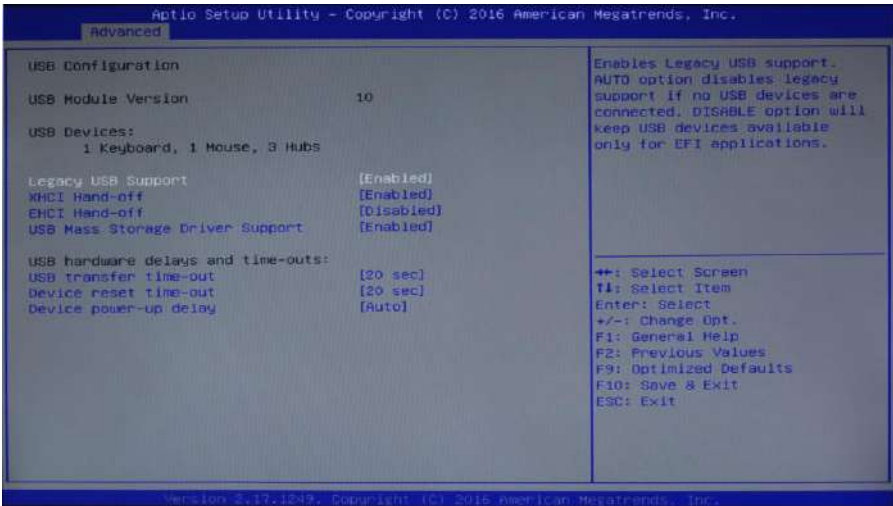
SATA ODD Port : Serial remote transmission port configuration

SATA Mode: (AHCI or IDE)

Serial-ATA Port 0: (enabled or disabled)

Serial-ATA Port 1: (enabled or disabled)

### 3.2.10 USB Configuration



Legacy USB Support :

This is used for old version USB setting, if need to support USB devices in DOS, such as U disk, USB keyboard, etc., choose the option [Enabled] or [Auto]. on the contrary, choose [Disabled].

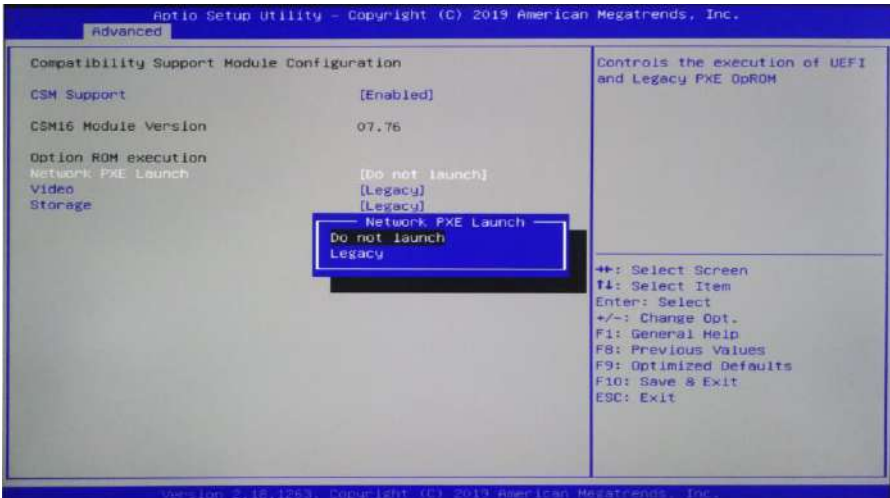
XHCI Hand-off :

When operating system does not support XHCI, whether to allow BIOS to take over XHCI control

USB Mass Storage Driver Support :

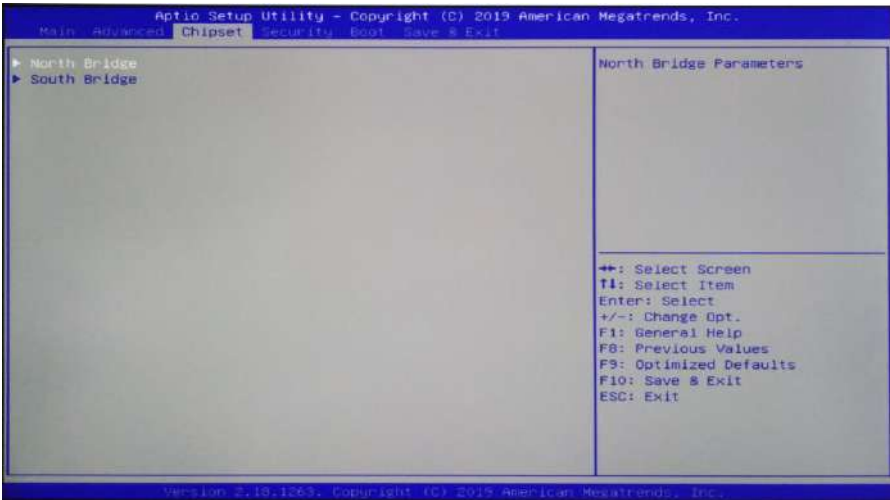


### 3.2.11 CSM Configuration



Network PXE Launch: set None-Disk boot, Do not Launch:close None-disk boot,  
Legacy: set None-Disk boot as Legacy mode.

### 3.2.12 Chipset



PCH-IO Configuration : South bridge configuration option, include audio card, LAN card options, etc.

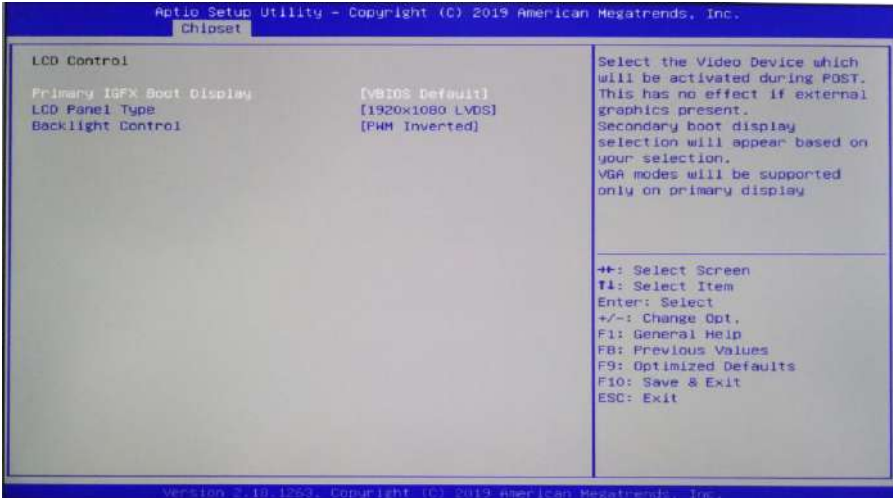
System Agent (SA) Configuration : North bridge configuration options, include

video memory, display device, LVDS, etc.



Intel IGD Configuration:

LCD Control:



Primary IGFX Boot Display:

LCD Panel Type:

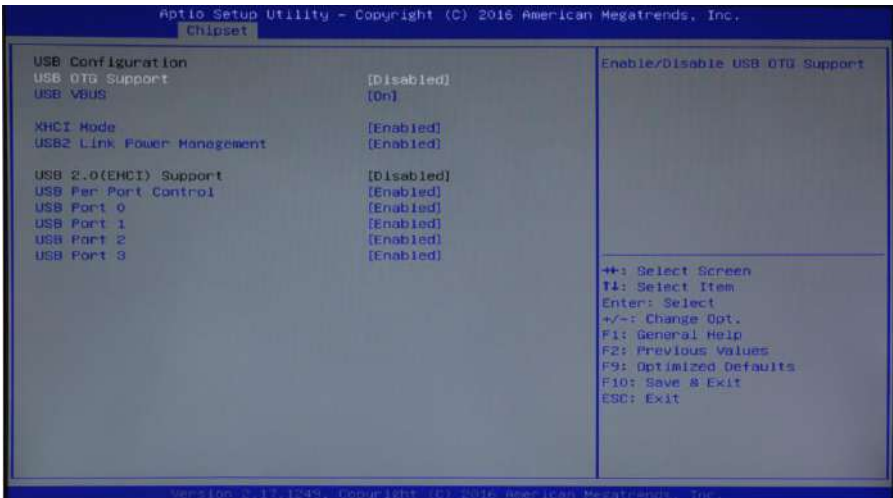
Backlight Control:



Azalia HD Audio:

USB configuration:

PCI Express Configuration :



XHCI Mode: USB XHCI Mode, Enabled / Disabled

USB OTG Support: Enabled / Disabled

USB VBUS: Enabled / Disabled

USB Per-Port Control: Enabled / Disabled

3.2.13 Boot



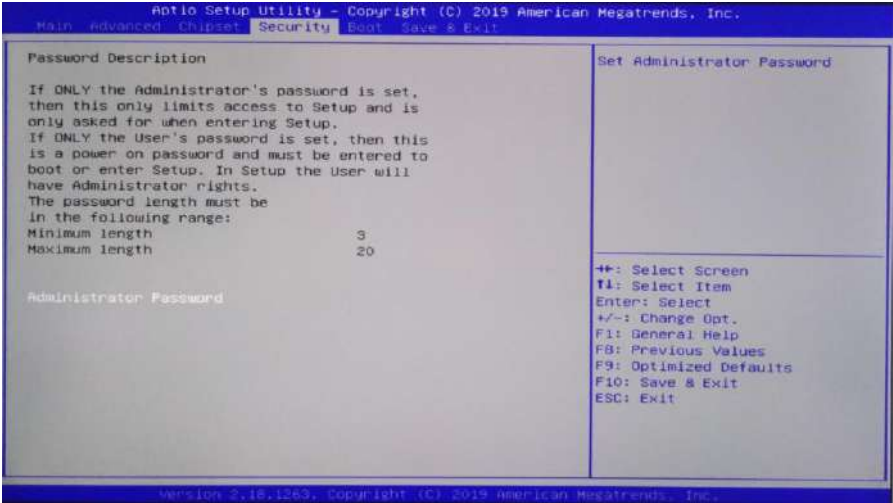
Setup Prompt Timeout: click the Setup shortcut key to wait time. If have not click the setup shortcut key in the setup time it will continue to boot.

Quiet Boot: ( Disabled or, enabled ) .

Fast Boot : ( Disabled or, enabled ) .

Boot Option Priorities : system will inspect device in accordance with the set procedure, until find a device that can be boot, and then boot from this device. Boot option #1 is the most preferred boot device.

3.2.14 Security

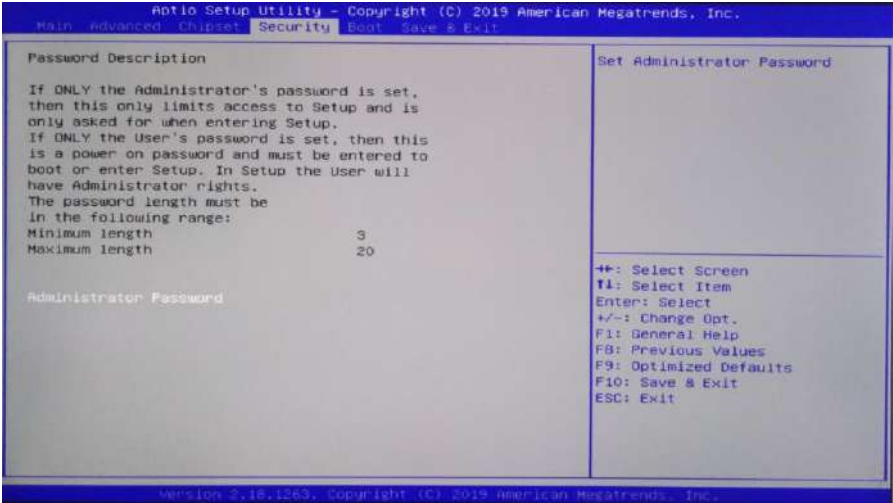


Password character length hint: the minimum length is 3, the maximum length is 20.

Administrator Password :

The option is used to set the super user password.

3.2.15 Save&Exit



Save Changes and Reset : Save the BIOS settings, and exit the settings interface, continue to start the computer

Discard Changes and Reset : Discard changes and exit setup interface, restart the computer.

Restore Defaults: Load optimization settings, if choose this, the system will be set according to the factory's optimal value.

Boot Override : Select the specified Boot devices, such as SATA hard disk, U disk, Shell EFI, PXE and so on, direct Boot, do not save and exit, press F11 to select the specified device Boot.

## **Appendix**

### **Appendix one: Glossary of terms**

#### **ACPI**

Advanced configuration and power management. The ACPI specification allows the operating system to control most of the power of the computer and its additional equipment.

#### **BIOS**

Basic input / output system. It's a software that contains all the input/output control code interface in PC. When the system starts, it carries out the hardware detection, began to the operation of the operating system, between the operating system and hardware to provide an interface. BIOS is stored in a read-only memory chip.

#### **BUS**

In a computer system, the exchange of data between the different parts of the channel, is a set of hardware lines. We refer to the BUS is usually CPU and main memory components within the local circuit.

#### **Chipset**

Chipset is designed to perform one or more functions integrated chip. We refer to is composed of South Bridge and North Bridge System on chip group, It determines the structure and main function of the motherboard.

#### **CMOS**

Complementary metal oxide semiconductor. Is a widely used semiconductor type. It has the characteristics of high-speed, low power consumption. We refer to CMOS is on the motherboard CMOS ram reserved space, used to save the date, time, system information and system parameter setting information.

#### **COM**

Serial port, a universal serial communication interface, generally use the standard DB9 common interface connection mode.

**DIMM**

Dual in-line memory module. A memory chip group of small circuit board. The memory bus width of 64bit.

**DRAM**

Dynamic random access memory. A normal computer general memory types. A transistor and a capacitor is usually used to store a single bit. With the development of technology, type and specification of DRAM has in computer application becomes more and more diverse. For example, are now commonly used are: SDRAM, DDR SDRAM and RDRAM.

**LAN**

Local area network interface. A small region mutual association of computer is composed of a computer network is generally in a business unit or building. LAN is generally by the server, workstations, some communication links, a terminal can anywhere through the wire access to data and equipment. Many users can be expensive equipment and resource sharing.

**LED**

Light emitting diode, a semiconductor device, when the current flows through it will be lit, usually used to represent the information very intuitive, such as the power supply has been turned on or the hard drive is working.

**PnP**

Plug and play. Allows the PC external devices to be automatically configured, users can not manually operate the system can work on their own specifications. To achieve this feature, BIOS support PnP and a PnP expansion cards are required.

**POST**

During the start up system, BIOS will perform a continuous testing on the system,



including the detection of RAM, keyboard, hard drives, etc., to see whether they are properly connected and whether the normal work.

**PS/2**

The IBM development of a keyboard and mouse interface specification.PS/2 is a DIN only 6PIN interface can also be used to connect to other devices such as a modem.

**USB**

Universal serial bus. A suitable for low-speed peripherals hardware interface, typically used to connect the keyboard, mouse, and so on. A PC up to 127 USB devices connected to provide a 12mbit / s transmission bandwidth; USB support hot swap and multiple data stream function, namely in the system can plug in a USB device, the system can automatically identify and allow the insertion of the device normal.

**Appendix Two: Common issue analysis and solution**

Common Faults	Check Points
No start up after connecting power	<ol style="list-style-type: none"><li>1. Make sure the power cable is connected properly</li><li>2. Please confirm all the power supply can meet the requirements of the motherboard</li><li>3. Try to re-plug the memory</li><li>4. Try to change the memory</li><li>5. Try to clear the CMOS according to motherboard manual</li><li>6. Please confirm whether there is an external card, remove the card and check again</li></ol>
VGA no display after power on	<ol style="list-style-type: none"><li>1 To check whether the monitor is open</li><li>2 Check whether the power cable is properly connected to the monitor and system unit</li><li>3 Check whether the display cable is properly connected to the system unit and the display</li><li>4 Check whether the display brightness control is set to the dark</li></ol>

	<p>state, can improve brightness through the brightness control.</p> <p>5 Display in the "power save" mode, press any key on the keyboard</p>
BIOS Setup can not be saved	<ol style="list-style-type: none"><li>1. Please check whether the CMOS battery voltage is lower than 2.8V, if so, please replace a new battery, set again and save</li><li>2. BIOS settings are not correct, according to the boot screen prompt button (DEL), adjust the time and date in the Setup BIOS</li></ol>
Prompt message cannot find bootable device	<ol style="list-style-type: none"><li>1. Please check whether the hard drive power cord, data cable is connected normally</li><li>2. Please check whether the hard disk has physical damage</li><li>3. Please check whether the operating system is normally installed on the hard disk</li></ol>
Blue screen or crash when enter into OS	<ol style="list-style-type: none"><li>1. Please check whether the memory card and the card is loose</li><li>2. Try to remove the newly installed hardware, uninstall the driver or software</li><li>3. Try to replace the memory</li></ol>
Slow speed to enter into OS	<ol style="list-style-type: none"><li>1. Try to use third party software to check whether the hard disk has bad sectors</li><li>2. Please check whether the hard disk remaining space is too small for operating system.</li><li>3. Please check whether the CPU cooling fan is rotating normally</li></ol>
System restart automatically	<ol style="list-style-type: none"><li>1. Please check whether the CPU cooling fan is rotating normally</li><li>2. Please check whether triggered reset button wrongly</li><li>3. Please use anti-virus software to confirm whether the system is infected with the virus</li><li>4. Please check whether the memory card and the card is loose</li><li>5. Please confirm that the power capacity is sufficient, can try to replace the power supply</li></ol>
Can not detect USB device	<ol style="list-style-type: none"><li>1. Please check whether the USB device needs separate power supply</li><li>2. Please check whether the USB interface has bad contact</li><li>3. Please check whether the USB controller is open in BIOS Setup</li></ol>