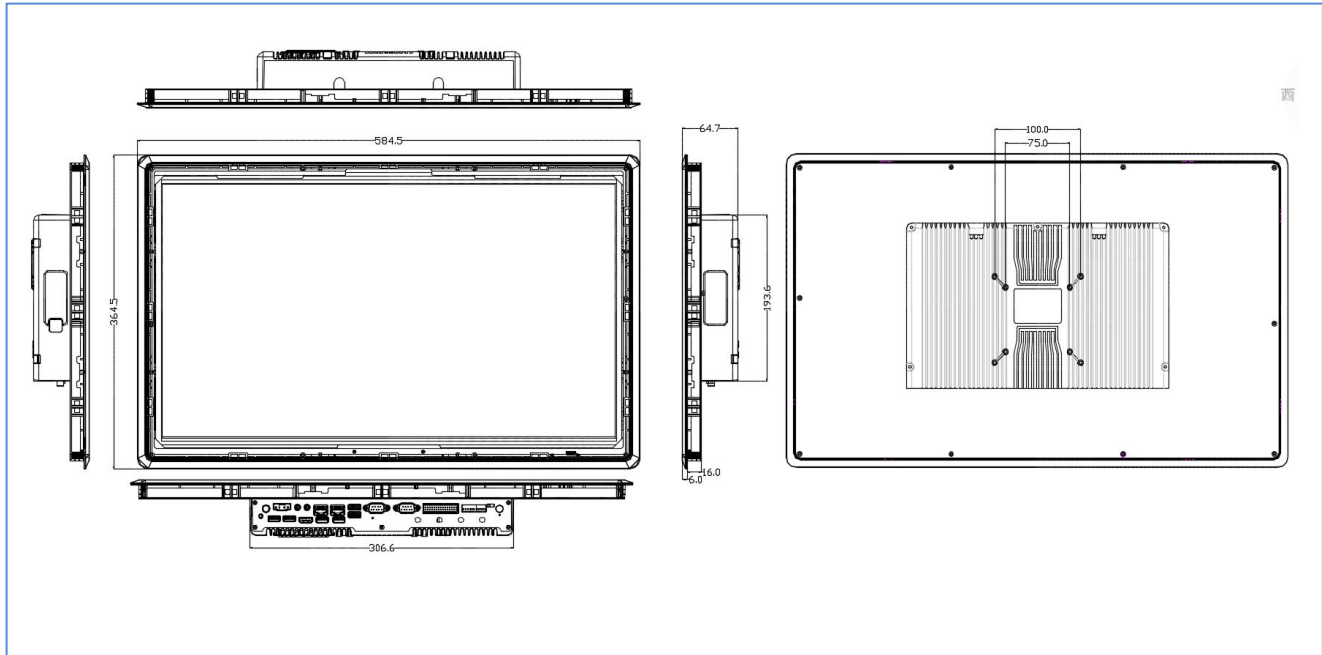




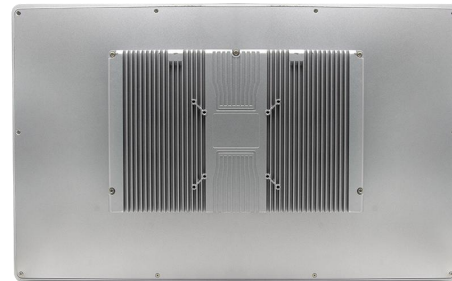
### Features

- 23.8"LCD, 1920\*1080, 16:9, capacitive touch screen
- Onboard Intel®Celeron J6412/2.00GHz quad cores CPU
- 2\*SODIMM DDR4-2400 RAM slot, up to 32GB
- 1\*HDMI
- 2\*Intel I210
- 6\*RS232, COM1~2 DB9 RS232, COM2 RS485/422, COM3~6 RS232 on 2\*15P Phoenix connector, COM3 RS485 selectable
- 4-in 4-out GPIO,4\*USB3.0, 2\*USB2.0
- 9~36V wide voltage input
- Aluminum case, fanless design

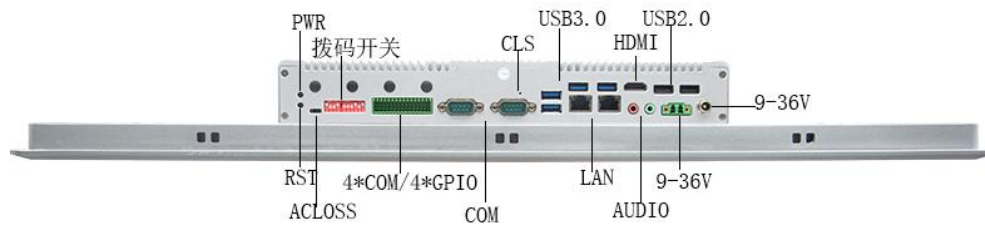
Model No.	P2381Y-C6 V1.0(J6412)	
Case	Material/Structure	Aluminum case, fanless design
	Color	Silver
	Dimension	L537*W365*H65mm
	Net Weight	8.5KG
	Installation	VESA mount / embedded
LCD Screen	Type	23.8" LCD, 16:9 wide screen
	Resolution	1920 * 1080
	Luminance	300 cd/m <sup>2</sup>
Touch Screen	Type	Capacitive, 10 point touch (resistive screen optional)
	Light Transmission	>86%
Mainboard	CPU	Onboard Intel®Celeron J6412/2.00GHz quad core 4-thread processor, TDP 10W
	Memory	2*DDR4-2400 SODIMM RAM slot, up to 32GB
IO Port	POWER	1*Power button, 1*One-key recovery (reset key optional), 1*ACLOSS (auto power ON/OFF)
	LED	1*Power LED, 1* HDD LED
	Display	1*HDMI
	LAN	2*Intel I210 Gigabit Ethernet, support Wake On LAN、 PXE
	USB	4*USB3.0, 2*USB2.0
	COM	6*RS232, COM1~2 DB9 RS232, COM2 RS485/422 selectable, COM3-6 RS232 on 2*15pin Phoenix connector, COM3 RS485 selectable, COM1-2 support pin9 charging function
	Phoenix Connector	2*15Pin( 4-in 4-out GPIO, 1*power signal/ 4*COM(RS232, 1*RS485), VCC, GND)
	DIP switch	10-digit DIP switch for COM2~3 RS232/485 selection
	Audio	1*Line out, 1*MIC
	Power	1*DC aviation port, 1*2Pin Phoenix connector, support DC9~36V voltage input
	Storage	SATA
M.2		1*M.2/SSD, support Key-M, 2280, NVME PCIe4 SSD
MSATA		1*MSATA
Expansion	M.2	1*M.2/WiFi, Key-E, 2230, support WiFi module
		1*M.2/5G, Key-B, 2242/52, support 5G module
OS Support	Windows	Windows 10
	Linux	Ubuntu
	Watch Dog	Support hardware reset function (L256, 0~255 seconds)
Power Supply	Power Type	External power supply
	Voltage Input	9V~36V
	Rate Consumption	60W~180W
Environment	Operating Temp.	-10°C ~ 50°C
	Storage Temp.	-20°C ~ 70°C
	Relative Humidity	5%-95% relative humidity, non-condensing
	Vibration	0.5g rms/5-500HZ/random/operating



Front View



Rear View



Bottom I/O View

## Order Information

No.	Model	CPU	Memory	Motherboard	IO Board	GPIO	LAN	COM	HDMI	USB 2.0	USB 3.0	power
1	P2381Y-C6 V1.0(J6412)	J6412/2.00G	2*SODDDR4	P641	P1081-C6/P1071-IO/P1071-LED	4-in 4-out	2	6	1	2	4	9~36V