



P2381Y-P4



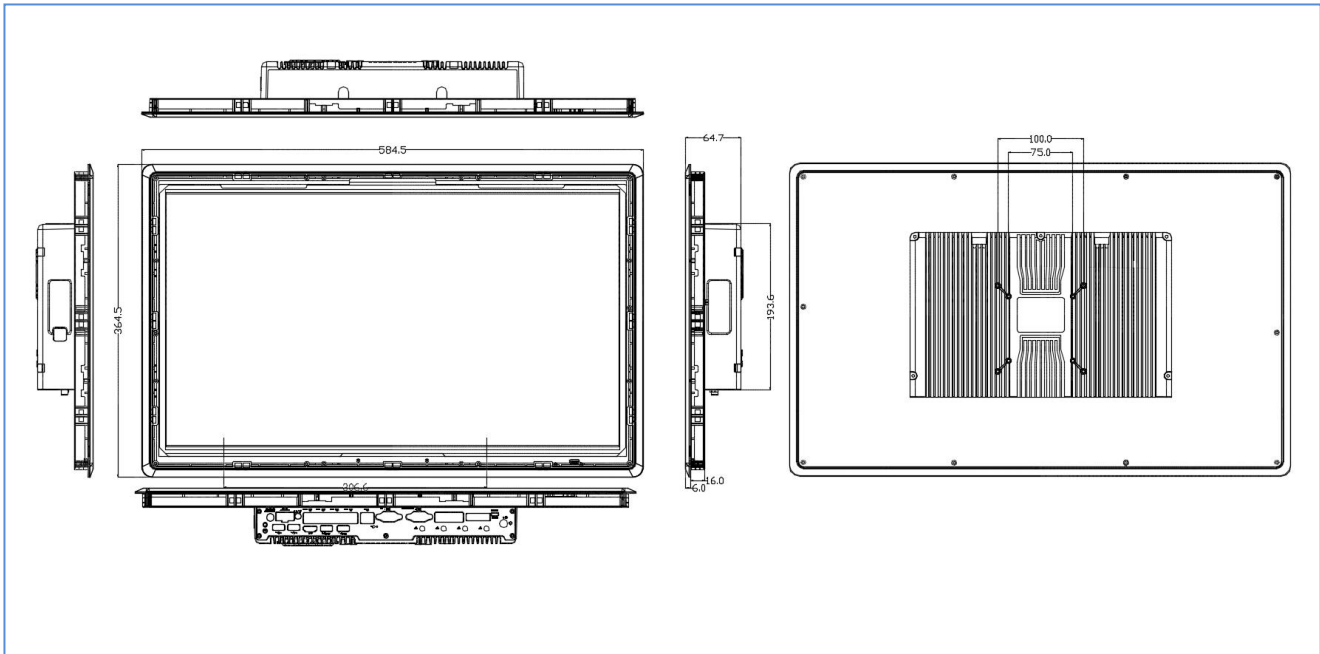
Features

- 23.8" LCD, 1920*1080, 16: 9, capacitive touch screen
- 1*HDMI
- 5*Intel I210AT Gigabit LAN port (4*POE)
- 4*RS232 (2*RS485, 1*RS422), COM1~2 DB9, COM3~4 on Phoenix connector
- 4-in 4-out GPIO, 2*USB3.0, 2*USB2.0
- 9~36V
- Aluminum case, fanless design

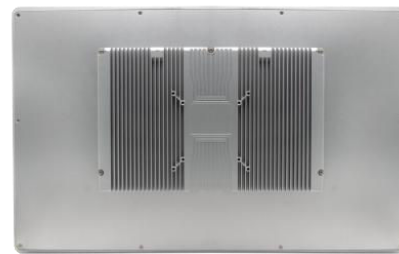
Model No.	P2381Y-P4 V1.0	
Chassis	Material/Structure	Aluminum case, fanless design
	Color	Silver
	Dimension	L584.5*W364.5*H64.7mm
	Net Weight	8.6KG
	Installation	Wall mount / VESA
LCD Screen	Type	23.8" full HD 16: 9 wide screen
	Resolution	1920 * 1080
	Luminance	300cd/m ²
Touch Screen	Type	Capacitive, 10 point touch (can change to resistive touch screen)
	Light Transmission	>85%
IO Port	POWER	1*Power button, 1*One-key recovery, 1*AC LOSS (auto power ON/OFF) 1*CMOS button
	Display	1*HDMI
	LAN	5*Intel I210AT Gigabit LAN port, 4*POE
	USB	2*USB3.0, 2*USB2.0
	Audio	1*AUDIO, Line out, 2 in 1
	COM	4*RS232, COM1~2 DB9 RS232, COM2 RS485/422, COM3~4 RS232 on 2*12pin Phoenix connector, COM3 support RS485, COM1-2 support pin9 charging function
	Phoenix Connector	2*12Pin (4-in 4-out GPIO, power signal, COM3~COM4, 5V VCC and GND)
	DIP Switch	10-digit dip switch for COM2~3 RS232/485 selection, COM2 RS422 selection via COM2_SW1 jumper
Storage	Power	1*DC (5.5*2.5) aviation port, 1*2P P=5.08mm connector, support 9V~36V power input
	SATA	1*2.5" SATA port
	MSATA	1*MSATA
	M.2	1*M.2 SSD port, support Key-M, 2280, NVME PCIe4 SSD
Expansion	M.2	1*M.2/WiFi, support Key-E, 2230, WiFi module
		1*M.2/5G, support Key-B, 2242/52, 5G module
Power Supply	Power Type	External power supply
	Voltage Input	9V~36V
	Rate Consumption	AC TO DC 60W (depend on CPU and external device)
Environment	Operating Temp.	0°C ~ 50°C
	Storage Temp.	-20°C ~ 70°C
	Relative Humidity	5%-95% relative humidity, non-condensing
	Vibration	0.5g rms/5-500HZ/random/operating



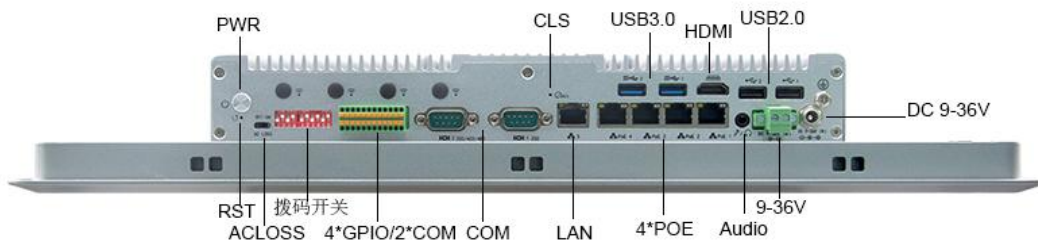
Dimension



Front View



Rear View



Bottom I/O View



Order Information

No.	Model	CPU	Memory	Motherboard	IO Board	GPIO	LAN	COM	HDMI	USB 2.0	USB 3.0	power
1	P2381Y-P4 V1.0(7300U)	I5-7300U/2.6G	2*SODDDR4	P68	P1082-P4/P177-IO/P1071-LED	4-in 4-out	5	4	1	2	2	9~36V
2	P2381Y-P4 V1.0(8260U)	I5-8260U/1.6G	2*SODDDR4	P81	P1082-P4/P177-IO/P1071-LED	4-in 4-out	5	4	1	2	2	9~36V
3	P2381Y-P4 V1.0(10210U)	I5-10210U/1.6G	2*SODDDR4	P102	P1082-P4/P177-IO/P1071-LED	4-in 4-out	5	4	1	2	2	9~36V

